



740 W. UNIVERSITY HEIGHTS DRIVE S, FLAGSTAFF | ARIZONA

# Available 1.47 Acre Parcel Zoned High Density Residential

## Contact:

Kevin B. Call, CPA  
Principal  
Designated Broker  
928 440 5450  
Kevin@KellyandCall.com

Rob Gerlak  
Principal  
928 440 5450  
Rob@KellyandCall.com

[KellyandCall.com](http://KellyandCall.com)



## 740 W. University Heights Drive S., Flagstaff | AZ

The Church of the Resurrection has decided to sell a pristine 1.47 acre portion of their property. It is zoned High Density Residential (HR) which is appropriate for medium to high density multi-family residential development. This is an excellent location for an apartment complex or condo project. The Church of the Resurrection is on the corner of S. Beulah Blvd. and University Heights Drive S.

Located in a prime west side of Flagstaff location within a mile of Northern Arizona University and close to all major services. This is a nicely wooded lot that will be excellent for multi-family development. The buyer will be responsible for splitting the lot and obtaining a survey once the exact location of the parcel is determined.

### Highlights

- All utilities are on property
- Excellent neighborhood in Flagstaff
- Nicely treed lot
- Within walking distance to Northern Arizona University

**1.47 Acre**  
**\$749,000**

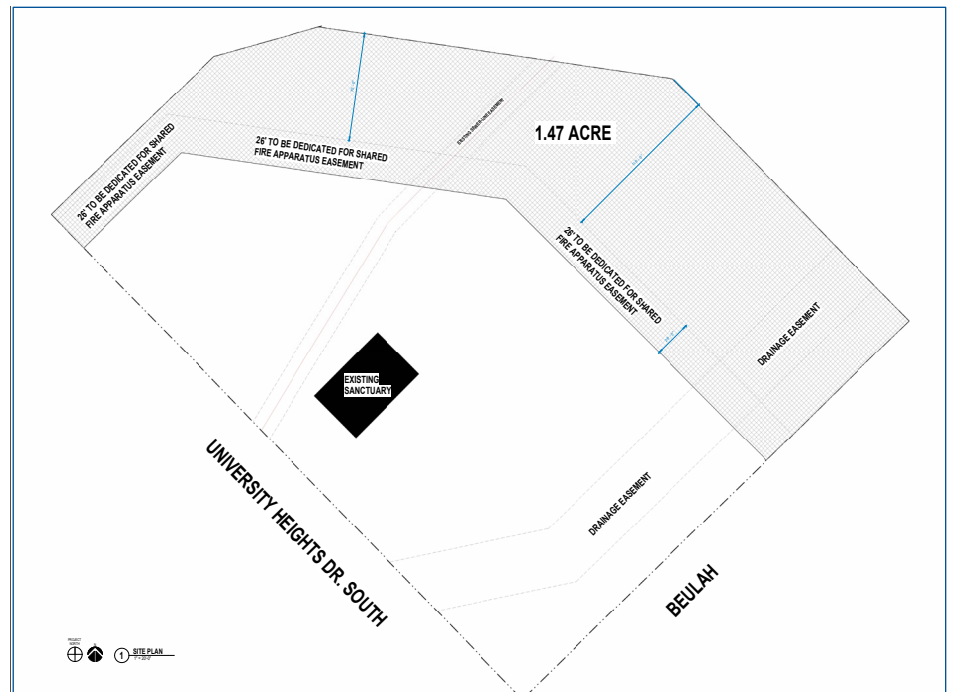
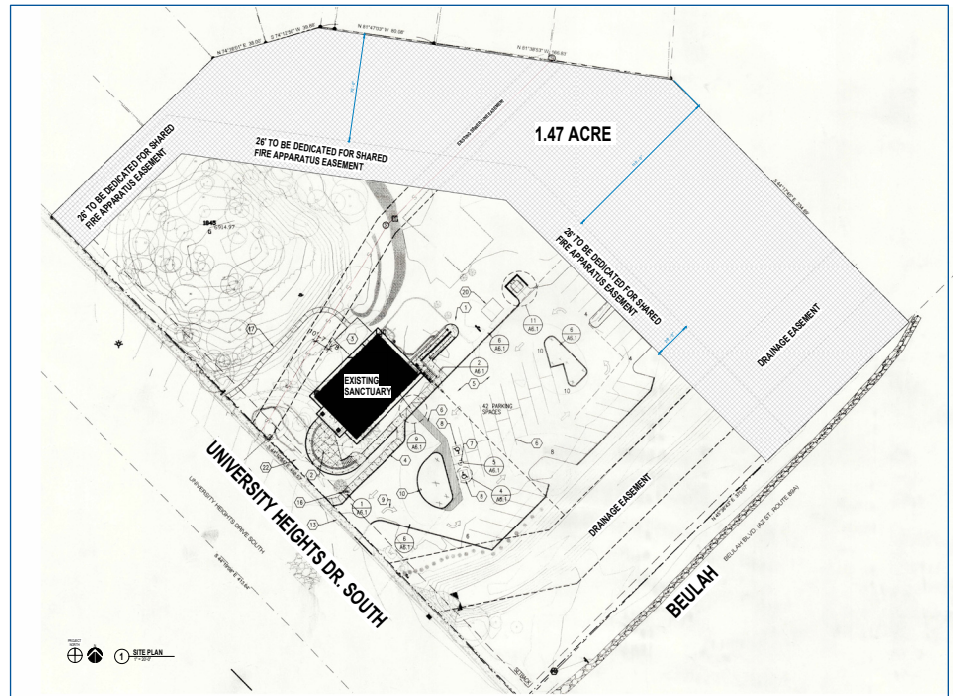




Image Google Earth

## 740 W. University Heights Drive S., Flagstaff | AZ